

# Current state of Library facility. Upton MA, April 2021

Report prepared by Library staff and approved by Upton Community Center Building Committee April 27, 2021. Renderings of proposed Community Center are from April 6 designer presentation:

[https://www.uptonma.gov/sites/g/files/vyhlf5121/f/uploads/2021.04.06\\_ucc\\_bc\\_meeting.pdf](https://www.uptonma.gov/sites/g/files/vyhlf5121/f/uploads/2021.04.06_ucc_bc_meeting.pdf)



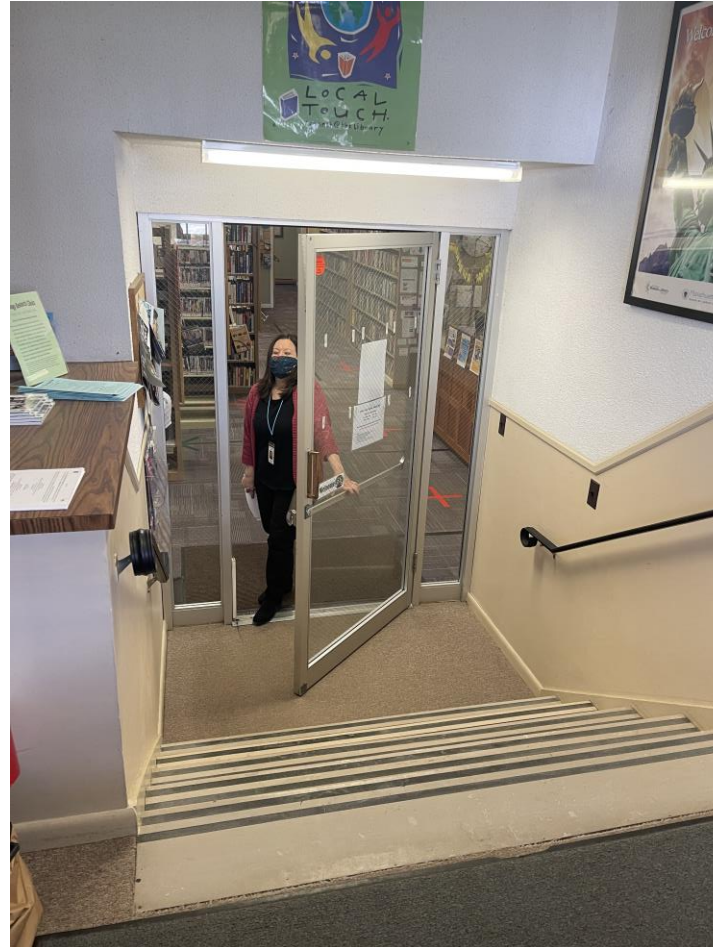
Q. Why do we need a new library facility?

A. The current library building is not fit nor cost effective to continue as a library.

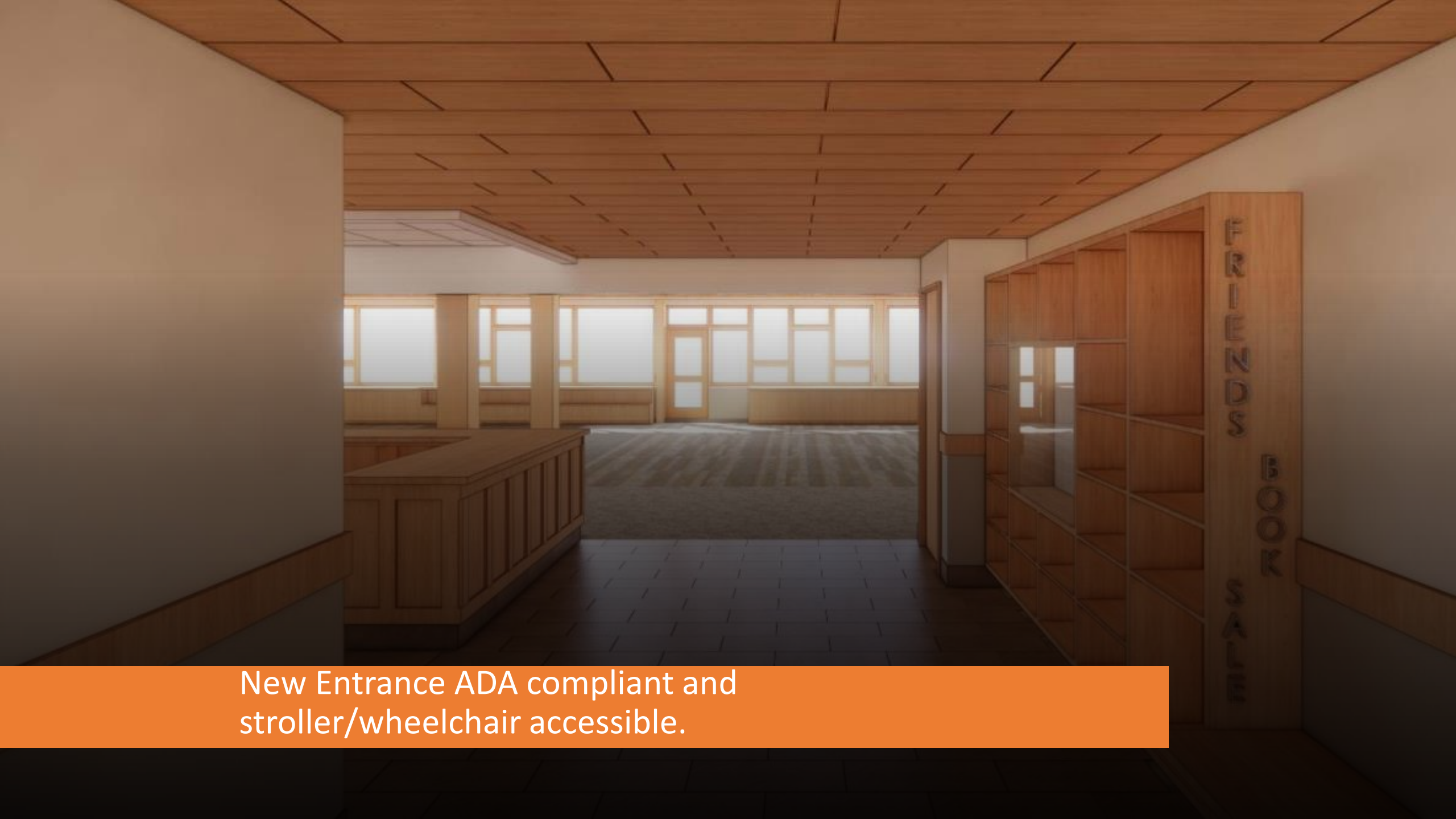
Front door from exterior



Interior door leading to Library



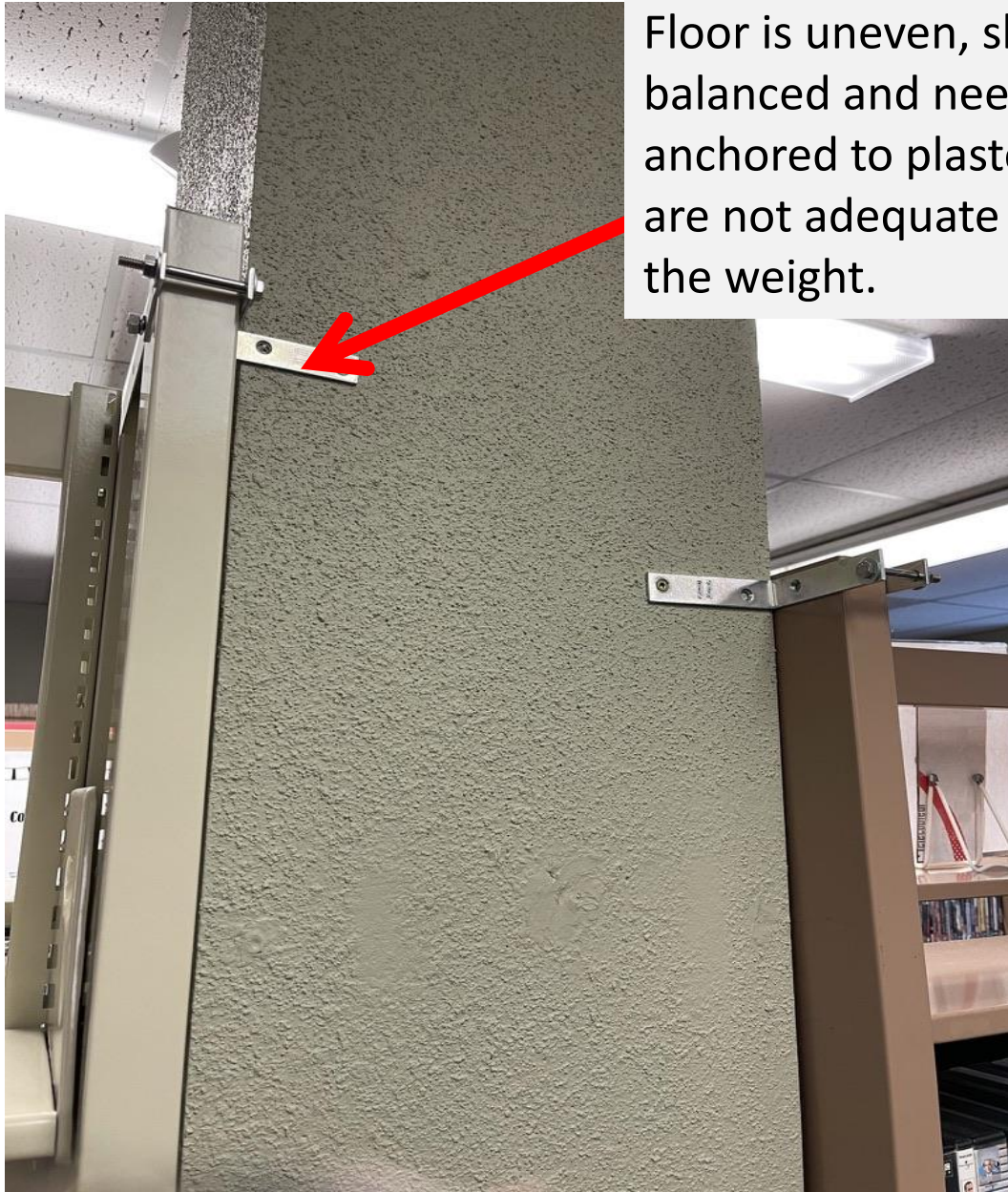
- Current entrance is not handicapped accessible.
- No clearance at bottom of interior steps.
- Difficult for walkers, canes, strollers and deliveries.



New Entrance ADA compliant and stroller/wheelchair accessible.



Floor is uneven, shelves are not balanced and need to be anchored to plaster walls that are not adequate to support the weight.





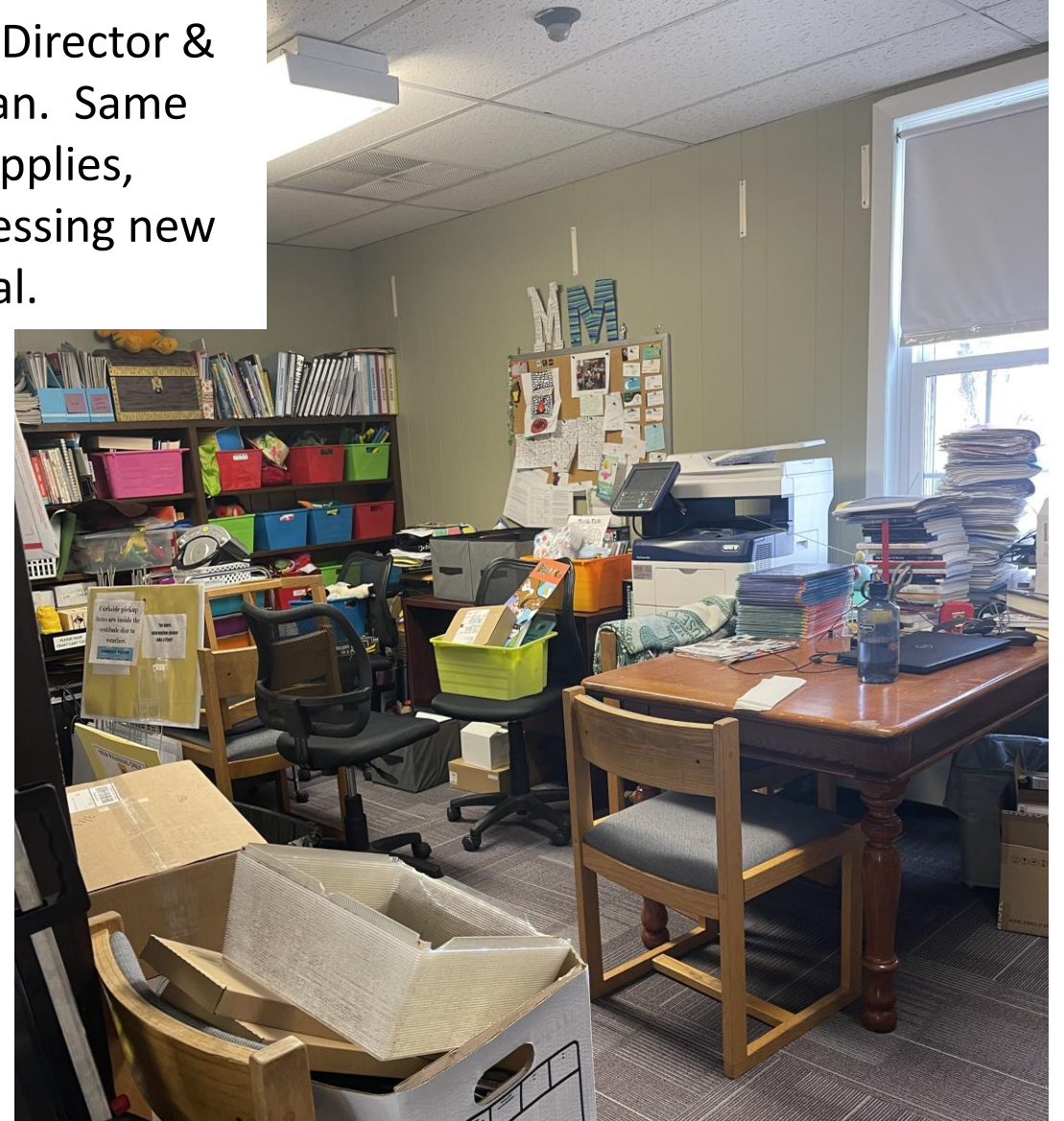


- Shelves that are adequately spaced and safely installed to support the weight of books.

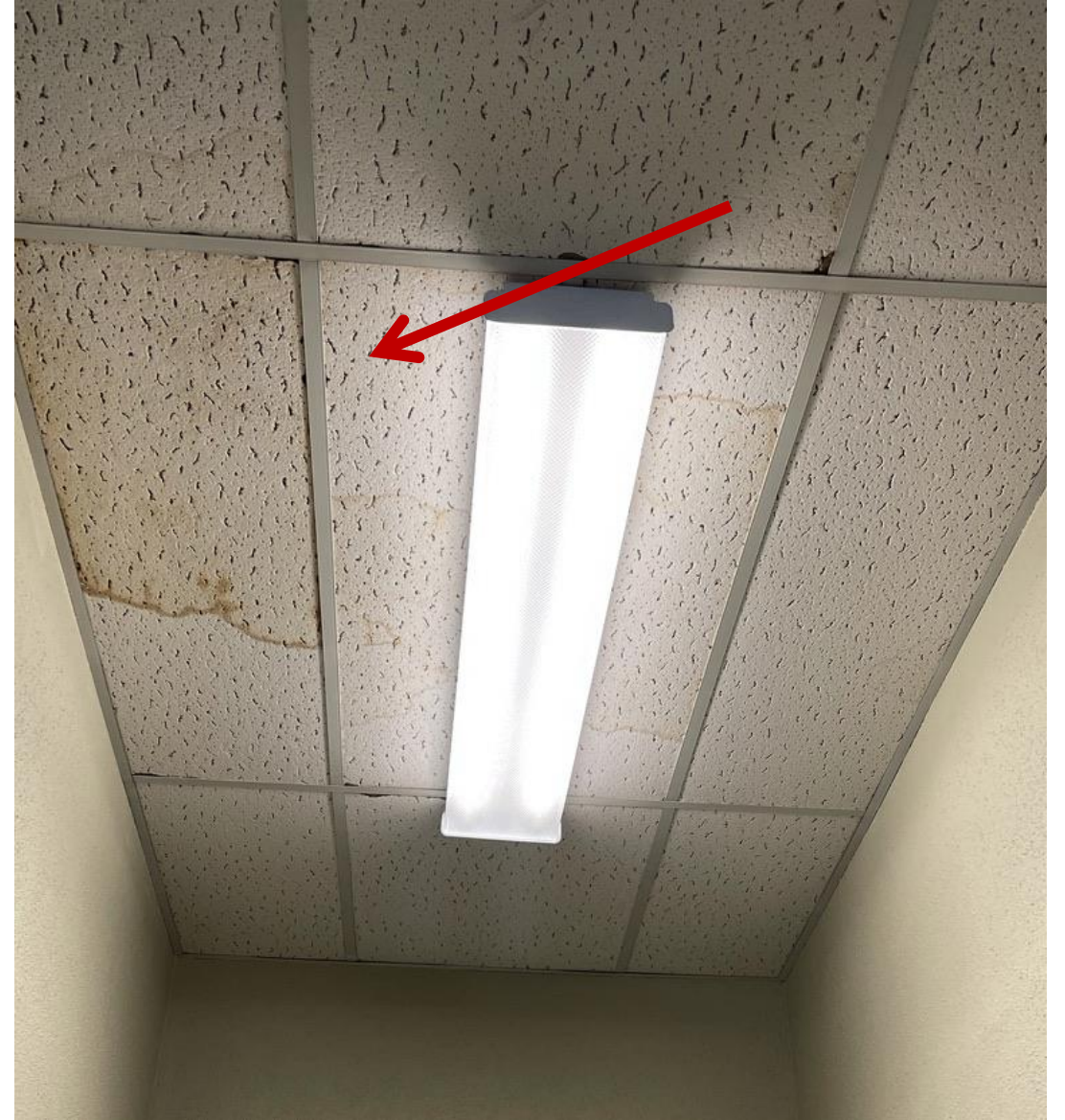




Office for Library Director & Children's Librarian. Same space used for supplies, storage and processing new collection material.











- Water damage on walls and ceilings.
- Peeling laminate floors and cracked paneling in bathrooms.
- Cracked window not available for manufacturer replacement.
- Plaster on walls contains asbestos.





Classroom in proposed Community Center, with access to playground.



- Inadequate size of current children's area. On many occasions families have been turned away due to space constraints.





Dirt floor and flagstone basement/crawlspace with intrusion of water and mold.





- Persistent rodent activity throughout the current facility.





- Metal exterior siding covered in mold and cannot be washed without risk of extensive damage to the material.
- 8 parking spaces and 1 non-ADA compliant handicapped labelled space.
- No accessible entrance to the building.









Safe, accessible, clean & energy efficient building with  
over 85 parking spaces available.